



PIPELINE CONSTRUCTION

We're working in the Government Street area in Burnaby, BC

January 2022 to December 2022*

In late 2021, Trans Mountain began preparatory work to support construction of the Trans Mountain Expansion Project (TMEP) in the Government Street area of Burnaby, BC. Trans Mountain plans to begin construction at this location in early 2022*.

Following preparatory work, construction will occur in a series of phased activities along the pipeline right-of-way through December 2022*. More information follows, including types of activities and timing at each site. Your patience is appreciated as we work to minimize any disruptions or inconvenience associated with these activities.

Temporary Closure of Government Street and Burnaby Mountain Urban Trail Detour

Later this year, construction of the pipeline will occur within Government Street, between Horne Street and the Burnaby Mountain Urban Trail. During work in this section, Government Street will be closed to traffic and a detour will be in place for approximately six months.

At this time and during construction along the Burnaby Mountain Urban Trail between Government Street and Lougheed Highway, temporary trail detours will be in place. Please follow all safety signage and traffic control personnel instructions.

More information will be provided in advance of this work. For current information, please visit our interactive map at www.transmountain.com/burnaby.

SCHEDULE OF PREPARATORY WORK*

Approximate Date Range	Activities
Ongoing to March 2022	<ul style="list-style-type: none"> ○ Preparing the right-of-way ○ Underground utility location and relocation ○ Preparing access points ○ Tree removal

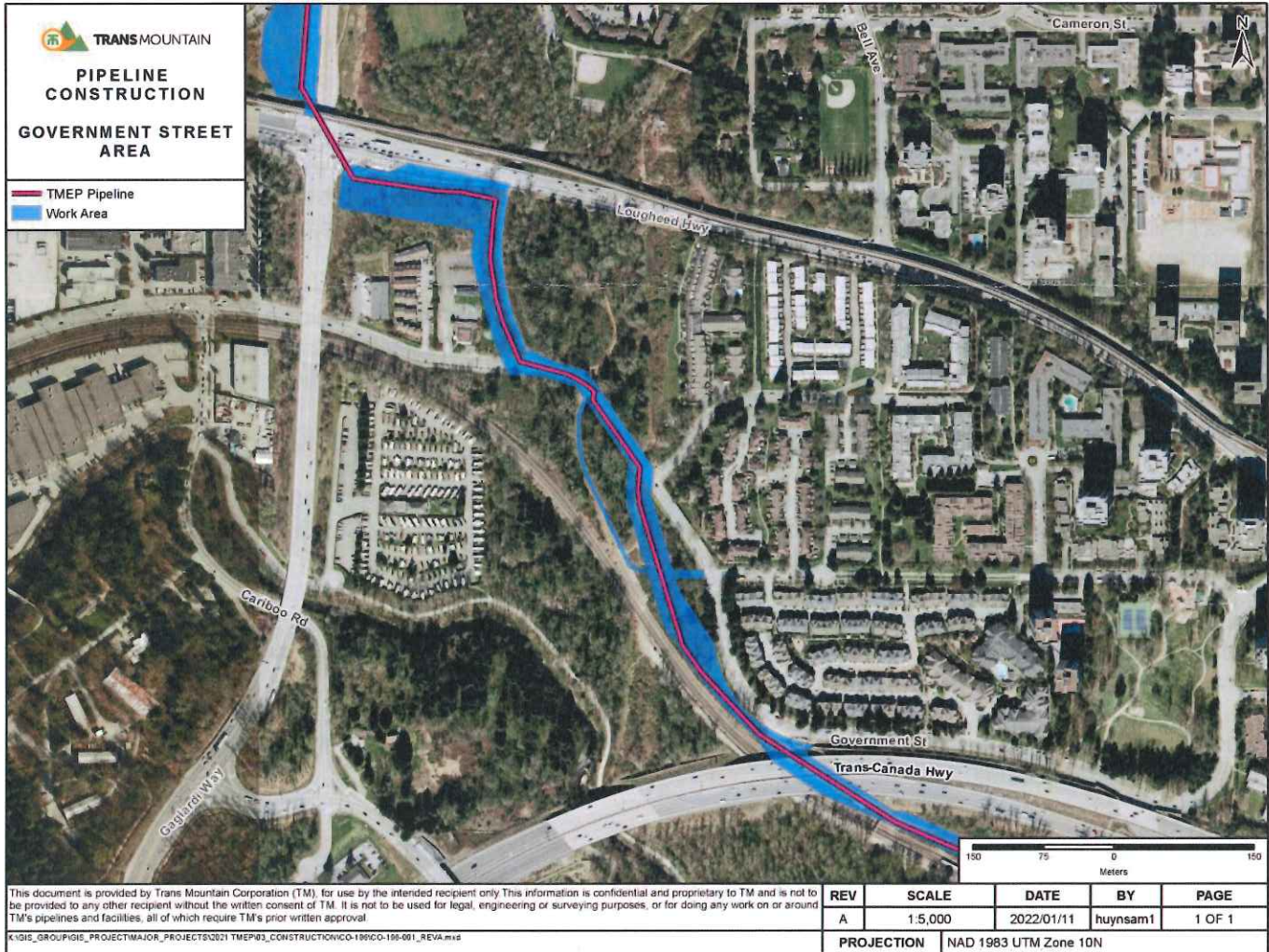
SCHEDULE OF CONSTRUCTION ACTIVITIES*

Approximate Date Range	Activities
January 2022 – December 2022	Pipeline construction including: <ul style="list-style-type: none"> ○ Pipeline construction ○ Trenchless crossing (Bore) of Lougheed Highway and Gaglardi Way ○ Hydrostatic testing

*Dates subject to change. Start of work subject to necessary regulatory approvals, agreements and permits. See map below.



AREA MAP**



Trans Mountain's first priority is the health and safety of our workforce, their families and our communities. In response to the evolving COVID-19 pandemic, Trans Mountain and our construction contractors for the Trans Mountain Expansion Project have been working diligently together to ensure adherence to all advice and direction from government and health officials both provincially and federally.

For more information on Trans Mountain's COVID-19 response, please visit transmountain.com/covid19

**WHAT YOU MAY NOTICE**

During the course of these activities, you may notice:

- Temporary traffic delays, road and lane closures, alternating traffic patterns and increased traffic volumes
- Temporary trail closures and detours
- Staging of trucks
- Tree and vegetation removal
- Construction signage, road barriers and traffic control personnel
- Increased activity, construction vehicles and equipment in the area
- Additional directed lighting where needed
- Hand digging and/or hydrovac excavation
- Temporary median removal
- Asphalt cutting and paving/patching
- Site surveying
- Pipeline installation
- Temporary construction impacts including intermittent construction noise, dust, odours

HOURS OF WORK**Preparatory Work**

- 7:00am to 5:00pm, Monday to Friday
- 9:00am to 8:00pm, Saturday
- No work is planned on Sunday and statutory holidays

Typical Construction Hours

- 7:00am to 7:00pm, Monday to Friday
- 9:00am to 8:00pm, Saturday
- No work is planned on Sundays and holidays
- Some activities may occur 24/7 (required for safe pipe installation)
- We will abide by the applicable noise mitigation measures outlined in the Pipeline Environmental Protection Plan, approved by the Canada Energy Regulator

OUR COMMITMENTS TO YOU

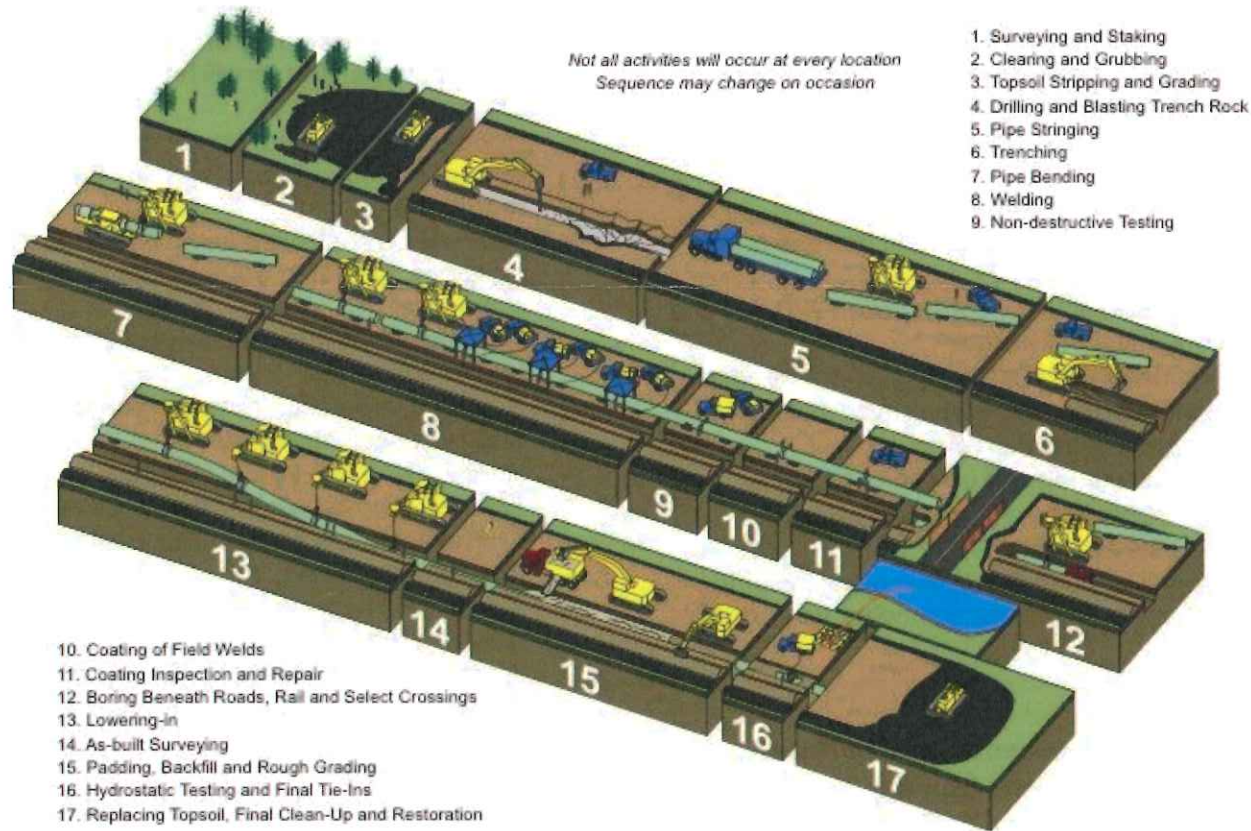
- Maintaining safe work environments
- Strategies for avoiding or reducing potential environmental effects will be employed at all stages of the Project
- Upon completion, the surveyed locations will be restored to municipal specifications and requirements
- Dust will be controlled using best industry practices, including water trucks and street sweepers
- Lighting will be directed only on areas of work for worker safety
- Tree and vegetation removal work will comply with necessary approvals
- Registered professional foresters and certified arborist will be on-site, as needed
- Traffic will follow site-specific traffic management plans
- Survey and hydrovac locations will be restored following completion of the studies
- Work will be monitored by Environmental Inspectors and Indigenous Monitors

PROJECT UPDATES

- To view a detailed map of this work area and to sign up for construction updates, please visit: www.transmountain.com/burnaby



Typical Trenched Pipeline Construction



For more information on Urban Construction, please visit: <https://www.transmountain.com/general-construction>

For more information on Trenchless Crossings, please visit: www.transmountain.com/trenchless-construction

All work will be conducted under Environmental Protection and Emergency Response Plans to ensure compliance with applicable environmental regulations and requirements. We will abide by applicable permitting requirements and will work as quickly as possible to complete these activities with minimal disruption.

CONTACT US:

Trans Mountain

info@transmountain.com

1.866.514.6700

transmountain.com

@TransMtn

youtube.com/transmtn

PO Box 81018
Burnaby, BC V5H 3B0

Pipeline or construction emergency?
Call 24/7: 1.888.876.6711